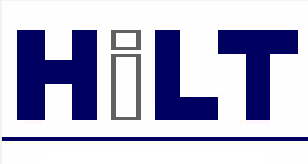


# About Our Company



HiLT means the 'handle' of a sword. We chose hilt as the name of our company because when our clients draw their sword to execute a project, the hilt is the first point of contact for the consultancy service provider to plan and give insights so that when the sword is brandished, the hilt has stabilised the sword and henceforth the project could be met with the confidence of a skilled swordsman. The hilt is the fulcrum of an innovative solution to assist the client in realising their vision.

HiLT was formed in Singapore in the year 2002 with 3 Partners to provide a total solution in terms of consultancy services for the building and construction industry in the areas of Mechanical (M), Electrical (E), Civil and Structural (C&S) Engineering.

Since 2002, the company has founded its niche as a **Fire Consultant Specialist**, encompassing all things M&E and C&S required to deliver holistic fire engineering solutions for the **built environment, transit & infrastructure projects and oil & gas projects.**

Our main office is headquartered in **Singapore**, with operating offices in Kuala Lumpur, Malaysia and associates in Brisbane and Sydney, Australia.



# WHO WE ARE

---



# OUR MISSION



## 01. Long Term Relationship

We believe that serving our clients' long term interests is also our interest.



## 02. Clients' needs

We are sensitive to our clients by always matching their needs with our capabilities, in the most economical and innovative manner.



## 03. Engineering Solutions

Beyond prescriptive codes and design solutions, we continue to push boundaries by making use of best in class software for practical applications.

# OUR VISION



## 01. Leading engineering consultancy

We continue to invest in ourselves to ensure we can be the best in class for what we do.



## 02. Industry Relevance

We focus our expertise in the built environment and ensure that we are competent in the projects we undertake. We participate in the design of buildings, road tunnels and transit infrastructure.



## 03. Solutions Provider

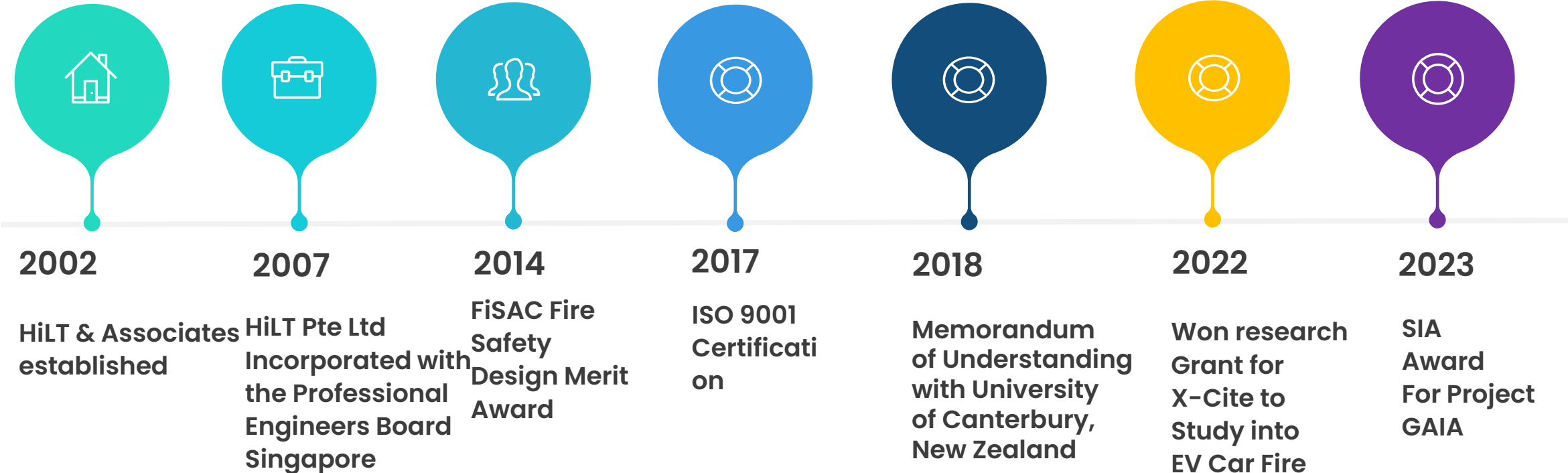
Every client is important to us, we are specialist consultants to developers, owners, contractors and fellow consultants.



## 04. Code Development

We involve ourselves actively in the planning and implementation of new codes and standards to best serve the industry.

# COMPANY TIMELINE



# CERTIFICATION

**1 ACRA 2007**

ACCOUNTING AND CORPORATE REGULATORY AUTHORITY  
**Company No: 200723557C**  
**CERTIFICATE CONFIRMING INCORPORATION OF COMPANY**  
 This is to confirm that **HILT PTE. LTD.** is incorporated under the Companies Act (Cap 50), on and from 24/12/2007 and that the company is a **PRIVATE COMPANY LIMITED BY SHARES.**  
 GIVEN UNDER MY HAND AND SEAL ON 23/01/2008.  
**NIJUNAVATI NONGCHIK**  
 ASST REGISTRAR  
 ACCOUNTING AND CORPORATE REGULATORY AUTHORITY (ACRA)  
 SINGAPORE  
 CERTIFIED TRUE COPY

**2 PEB LICENCE**

REPUBLIC OF SINGAPORE  
**PROFESSIONAL ENGINEERS ACT (CHAPTER 202)**  
**LICENCE TO SUPPLY PROFESSIONAL ENGINEERING SERVICES**  
**HILT PTE. LTD.**  
 having its principal place of business at  
**510 Temple Street #03-00 Singapore 050598**  
 is issued a licence to supply professional engineering services in Singapore relating to the branch of engineering of  
**Civil & Mechanical**  
 subject to the following conditions as stipulated in section 21 of the Professional Engineers Act:  
 1) The licensee must supply professional engineering services in Singapore through a professional engineer:  
 (a) who is responsible for the professional engineering works;  
 (b) who has in force a practicing certificate authorizing the professional engineer to engage in professional engineering work to which these services relate; and  
 (c) who is:  
 (i) in the case of a corporation, a director or an officer of the corporation;  
 (ii) in the case of a partnership, a partner or an employee of the partnership; or  
 (iii) in the case of a limited liability partnership, a partner or an employee of the limited liability partnership.  
 2) The licensee, if it is a limited corporation or a limited liability partnership, must not employ professional engineering services in Singapore unless the licensee is bonded in respect of professional liability in accordance with the Professional Engineers Act and the rules made under that Act.  
 This licence is valid on or after the date of issue as shown below and expires on  
**28 August 2020**  
 Licence issued on: **01 September 2019**  
 Licence No: **12015-194**  
 Reference No: **PEB13108-1**  
 Registrar  
 Professional Engineers Board  
 Singapore  
 Licence Fee received: \$300.00

**3 FSE LICENCE**

SINGAPORE CIVIL DEFENCE FORCE  
**Certificate of Registration**  
 This is to certify that  
**HO VICTOR**  
**8707383Z**  
 having complied with the relevant requirements of the Fire Safety Act (Chapter 119A), is authorized to practice as a **FIRE SAFETY ENGINEER for BUILDING FIRE SAFETY WORKS** in the Republic of Singapore and his or her name is accordingly entered in the Register of Fire Safety Engineers.  
**COMR JAMES TAN CHAN SENG**  
 SINGAPORE CIVIL DEFENCE FORCE  
 MADE THIS 3 JULY 2019  
 REGISTRATION NO.: 886

**4 INSPECTION LICENCE**

SINGAPORE CIVIL DEFENCE FORCE  
**Certificate of Registration**  
 This is to certify that  
**HO VICTOR**  
**8707383Z**  
 having complied with the relevant requirements of the Fire Safety Act 1992, is authorized to practice as a **REGISTERED INSPECTOR for MECHANICAL & ELECTRICAL FIRE SAFETY WORKS** in the Republic of Singapore and his or her name is accordingly entered in the register of registered inspectors.  
**ERIC YAP**  
 COMMISSIONER  
 SINGAPORE CIVIL DEFENCE FORCE  
 MADE THIS 15<sup>th</sup> DAY OF MARCH 2014  
 REGISTRATION NO.: 383

**5 ISO 9001:2015**

G-CERTI Certificate  
 G-CERTI hereby certifies that  
**HILT PTE LTD**  
 510 Temple Street #03.00, Singapore 050598  
 has been audited and certified as meeting the requirements in scope of registration  
**ISO 9001:2015** Quality Management System  
 Provision of Building and Engineering Consultancy Services  
 Certificate No: GRSG 0196-QC  
 Issue Date: 22 Nov 2017 Issue Date: 14 Nov 2019  
 Expiry Date: 21 Nov 2020 Valid Period: 14 Nov 2019 - 21 Nov 2020  
 Signed and Attested (G-CERTI) Prohibit 18/1/14  
**G-CERTI** IAF

HiLT Pte Ltd is ISO certified and registered with the Professional Engineers Board (PEB) as a multi disciplinary consultancy firm with a focus in fire engineering (valid professional indemnity of S\$5 Million). We are also a registered Fire Safety Engineer and Inspector licensed firm with SCDF.

# APPOINTMENT AND AWARDS

1 SCDF SFEGL

2 SCDF CPFRTS

3 FiSAC Award

4 Lisbon Conference

5 Code Drafting

- As part of our involvement with current code and practices, Hiltl Pte Ltd is appointed by SCDF as a member of:
- the review committee for the Singapore Fire Engineering Guidelines (up till 2024); incumbent committee member for 2015 guidelines
  - the working committee for Code of Practice for Fire Precautions in Road Tunnels (up till 2024)
  - the working group for SS634: 2018 Fire Safety for Open Plant Processing Facilities in Oil, Chemical and Processing Facilities

We are an award winning firm for fire safety design and also contribute to the global fire engineering community by attending conferences and presenting papers (Lisbon, 2018, Jakarta SFPE Conference, 2017 etc.).

About Us

# We Provide The Following Core Engineering Services



## Fire Safety Engineering

Performance based solutions, fire engineering assessment, CFD simulation



## Fire Protection Design

Engineered Smoke Control Systems, Tunnel Water Mist Systems, Foam Systems, Clean Agent Systems, Automatic Sprinklers



## Inspection

Registered Inspector (SCDF) services, Fire Cert Renewals, Testing and Commissioning for Fire Protection Services



## Fire Life Safety

Holistic review and documentation of transit projects

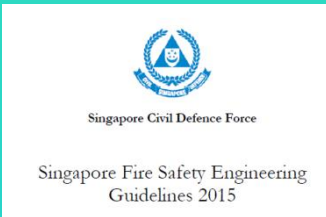
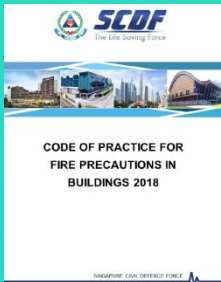


## Civil & Structural Engineering

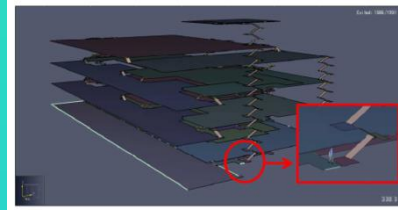
Cost effective C&S design honed from our years of designing for high tech factories and structural fire engineering for steel and timber buildings



# FIRE SAFETY ENGINEERING

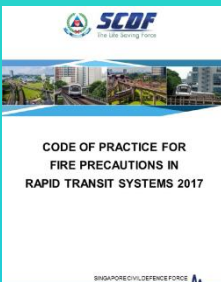


Preparation of Fire Engineering Design Brief (FEDB)

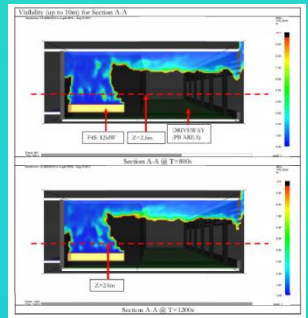
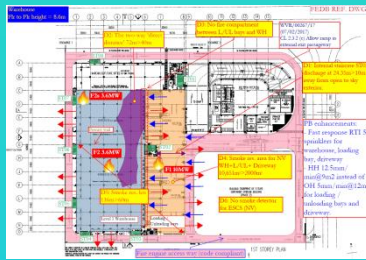


CFD, Evacuation Analysis and Fire Safety Engineering Report (FSER)

QP Certification and Hot Smoke Test / RI Inspection

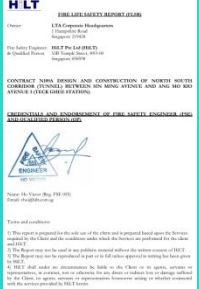
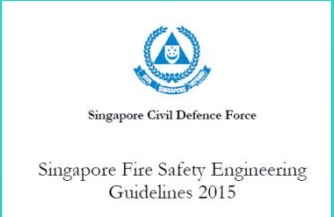
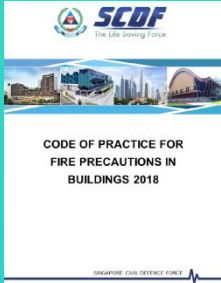


Code Review and identification of deviations

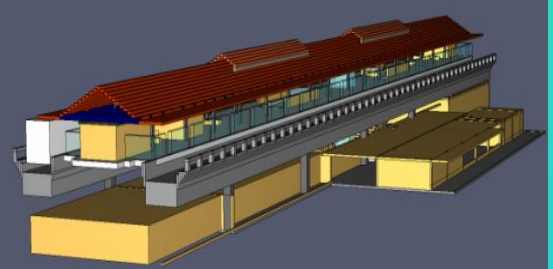


We involve ourselves early on in the project by applying scientific and engineering principles, codes and expert judgement in identifying fire risk and phenomena. Optimal fire engineer to project ratio is assigned as the engineer follows through from start to finish; concept to construction, whether it be a performance-based project or fire engineering assessment.

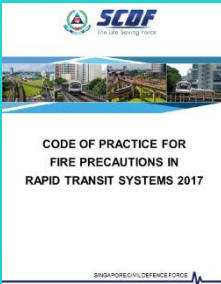
# FIRE LIFE SAFETY



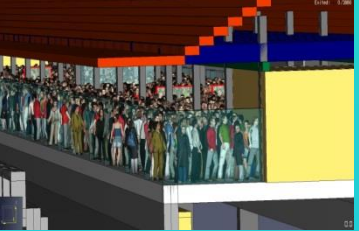
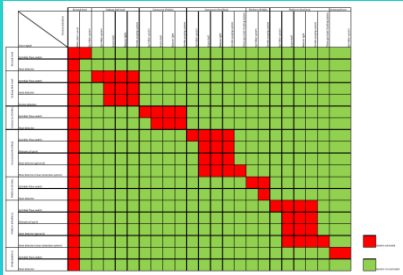
Fire & Life Safety Report (FLSR)



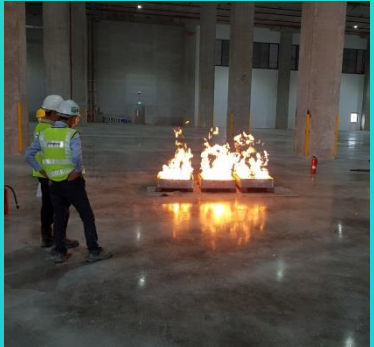
FSE Endorsement / RI Inspection



Code Review and identification of deviations

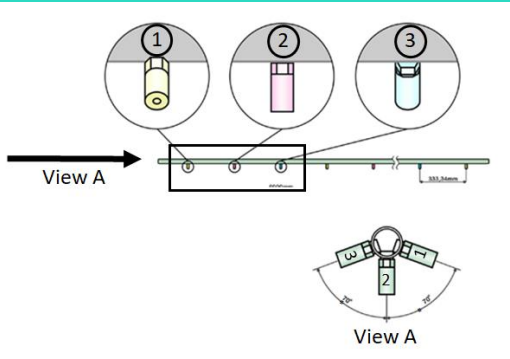


CFD and Evacuation Analysis Report



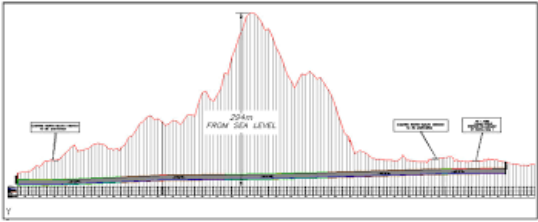
We are well versed in fire codes and standards for buildings, rapid transit systems and tunnels. We are typically involved from preliminary concept stage to commissioning of building. We review the designs of the fire and life safety systems with due diligence and scrutiny so as to meet the objectives of the codes and ensure an adequate level of safety for the intended occupants.

# SPECIALISED FIRE PROTECTION DESIGN



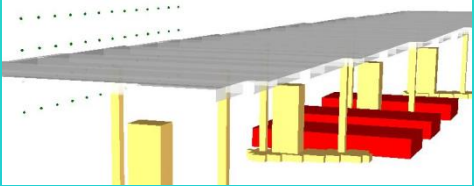
Water Mist Fire Fighting System for Tunnels

Large Scale Tunnel Fire Testing



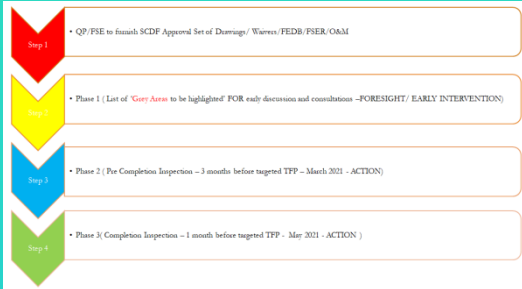
Tunnel Fire Safety Design

Radiant Heat Flux Study



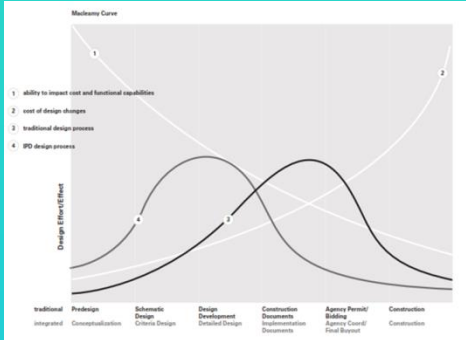
We are involved in projects as part of an international team of experts for specialized fire protection systems such as water mist fire protection system for road tunnels. This involves large scale fire testing, design planning and engineering execution.

# INSPECTION



Integrated Project Delivery

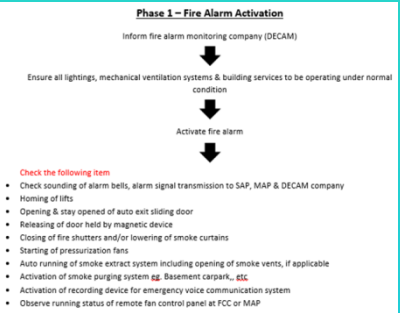
## Cost Savings Via Early Intervention



PROPOSED FIRE ALARM ACTIVATION MATRIX		Non-FCC	Agency's Emergency Alarm System / Approved Alarm System	RESIDENTIAL	RETAIL
OCCUPY ALTERNATIONS	Non-FCC				
	Agency's Emergency Alarm System / Approved Alarm System				
FIRE ALARM ORGANIZING FORM	Agency's Emergency Alarm System / Approved Alarm System				
	Non-FCC				
	Agency's Emergency Alarm System / Approved Alarm System				
	Non-FCC				

Cause Effect Matrix

## Customized Inspection Procedures



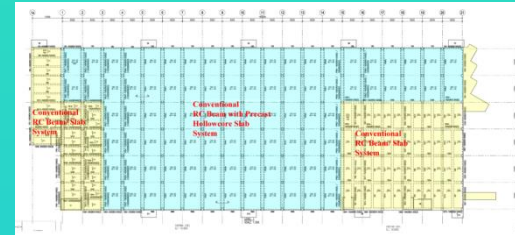
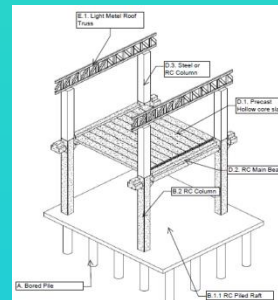
As inspectors, we are involved at the earliest stage of the project to provide code compliance advice for early intervention of any shortfalls.

# CIVIL & STRUCTURAL ENGINEERING



Understanding clients' structural needs

Proposed structural system to suit project requirements



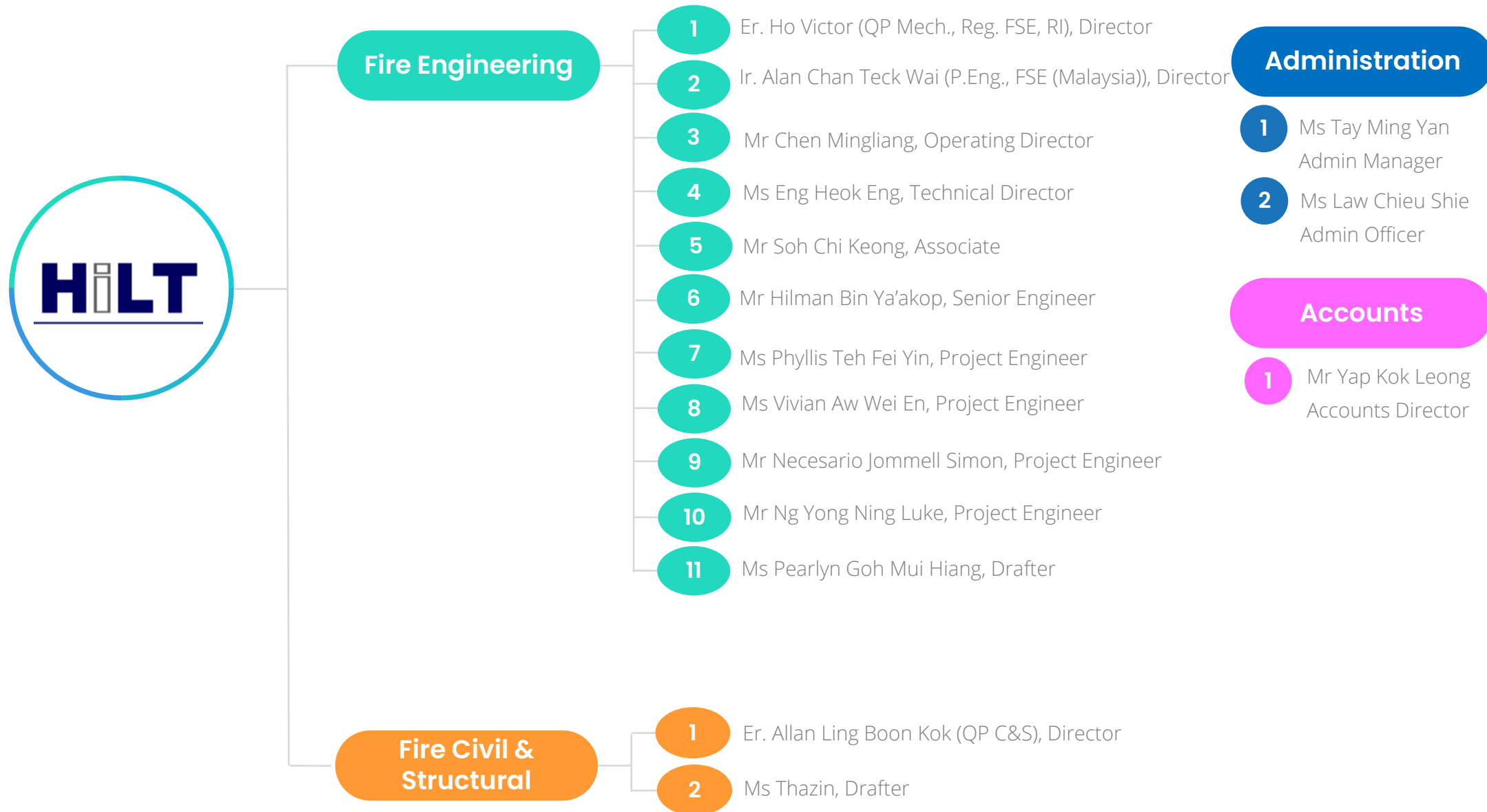
Detailed Structural Analysis and Design

Authority Submission and Preparation of Construction Drawing Leading to Final TOP



Apart from refining our processes honed from years of designing for high-tech factories, our structural team is also well-versed in structural fire engineering for steel and timber buildings.

# ORGANIZATION CHART



MEET OUR TEAM

# FIRE ENGINEERING

---

**HO VICTOR**

Founder, Director  
P.Eng. (Mech.), QP, Reg.  
FSE, Reg. Insp. (SCDF),  
DfSP  
Industry experience:  
27 years

**ALAN CHAN TECK WAI**

Director  
P.Eng. (Mech.), FSE  
*(Malaysia)*  
BEng Mech. (AUS)  
MEng. Fire Engineering  
(Maryland, USA)  
Industry experience:  
16 years

**LIM WAN SIN**

Technical Director  
P.Eng. (Mech.), QP  
(Mech), Reg. FSE, Reg.  
Insp. (SCDF), MIES,  
M.I.E.M, MASHRAE,  
MSFPE  
Industry Experience:  
44 years

**ENG HEOK ENG**

Technical Director  
MSFE, BA(Arch Studies)  
Industry Experience:  
18 years

**CHEN MINGLIANG**

Operations Director  
BEng Chem. Eng. (NTU)  
MEng. Fire Engineering  
(Maryland, USA)  
Industry experience:  
8 years  
Previous company:  
Jensen Hughes Pte Ltd

MEET OUR TEAM

# FIRE ENGINEERING

---

**SOH CHI KEONG**

Associate  
BEng Mech. Eng (NTU)  
Industry experience:  
9 years

**HILMAN BIN YA'AKOP**

Senior Engineer  
BEng Mech. Eng (NUS)  
MSc. (Integrated  
Sustainable Design)  
(NUS)  
Industry experience:  
12 years

**PHYLLIS TEH FEI YIN**

Project Engineer  
BEng Mech. Eng (NTU)  
MSc. Fire Engineering  
(Hong Kong)  
Industry experience:  
5 years

**VIVIAN AW WEI EN**

Project Engineer  
BEng CAD CAM (UM)  
Industry Experience:  
2 years





**NECESARIO JOMMELL SIMON**

Project Engineer  
BEng Mech. Eng (NTU)  
Industry experience:  
1 years



**NG YONG NING LUKE**

Project Engineer  
BEng Mech. Eng (NTU)  
Industry experience:  
1 years



**PEARLYN GOH MUI HIANG**

Drafter  
Dip. Mech, Eng (SP)  
Industry experience:  
27 years

MEET OUR TEAM

# FIRE STRUCTURAL ENGINEERING

---



**LING BOON KOK, ALLAN**

Founder, Director  
P.Eng. (C&S)  
Industry experience: 27 years



**THAZIN**

Drafter  
BEng. Civil Eng. (Mandalay)  
Industry Experience: 12 years

MEET OUR TEAM

# ACCOUNTS & ADMINISTRATION

---



**YAP KOK LEONG**  
Accounts Director



**TAY MING YAN**  
Admin Manager



**LAW CHIEU SHIE**  
Admin Officer

# PORTFOLIO SHOWCASE

Toll City Logistics  
 SingPost E-Commerce Hub  
 Yang Kee Integrated Log Hub  
 CWT Warehouse - Container  
 Supply and Retrieval System  
 Soilbuild Integrated Precast Hub  
 Carros Centre CarHub  
 NTUC Log Hub  
 Ascendas Food Exchange  
 Bedok Food City  
 Defu Industrial City  
 AIMS AMP Warehouse  
 Hup Hin Warehouse

**INDUSTRIAL**

Mapletree Logistics Hub  
 Mapletree Logistics Hub (Shah  
 Alam)  
 3M Production and Warehouse  
 Alcon Process Plant  
 Rolls Royce Red Dot Facility  
 Acteon Shipping Facility  
 Operations Centre  
 Remax Hightech Recycling Facility  
 Oxley Bizhub 1 & 2  
 Cogent Logistics Warehouse  
 Coca-Cola Pacific Foods ASRS  
 CT Hub 1 & 2  
 Tagore 8 & 9

**INDUSTRIAL**

Dubai Palm Jumeirah LRT  
 Teck Ghee - N109A MRT  
 Jurong East - J117 MRT  
 Thomson Line Stage 2 & 3  
 Tai Seng Depot  
 Bishan Depot  
 Klang Valley MRT - Sungai Buloh-  
 Kajang Ph 1  
 Klang Valley MRT - Serdang -  
 Putrajaya - Ph2 Eastern Corridor  
 Railway Link  
 High Speed Rail KL-SG  
 Al Rashidiya-Al Jumeirah  
 Transport Center-Dubai  
 Klang Valley LRT 3 - Butama-Klang

**TRANSPORT AND  
 INFRASTRUCTURE**

Changi Airport T3  
 Changi Airport T1  
 Seletar Airport  
 Brunei International Airport  
 Kuala Lumpur International  
 Airport  
 Clark International Airport -  
 Philippines  
 Changi Airbase Hangar  
 CTE & KPE Road Tunnel Fixed  
 Water-Based Fire Fighting System  
 HT Cable Tunnel Pandan-Jurong  
 HT Cable Tunnel Tuas-Pioneer  
 Dwarka Road Tunnel India  
 Rail Link Between Rishikesh and  
 Karanprayag  
 Marina Bay Cruise Centre

**TRANSPORT AND  
 INFRASTRUCTURE**

# PORTFOLIO SHOWCASE

---

FIRE LIFE SAFETY CONSULTANCY SERVICES FOR CONTRACT 1508 ADVANCED ENGINEERING CONSULTANCY SERVICES FOR THE PROPOSED NEW STATION ON EXISTING NORTH-SOUTH LINE

STATION'S EXIT ANALYSIS FOR PROJECT CR107 DESIGN AND CONSTRUCTION OF PASIR RIS EAST STATION

CONSULTANCY SERVICES OF FIRE ENGINEER FOR FIRE LIFE SAFETY REPORT & CFD SIMULATIONS FOR PROJECT P103 DESIGN AND CONSTRUCTION OF RIVIERA INTERCHANGE STATION AND TUNNELS FOR CRL-PUNGGOL EXTENSION

CONTRACT P105 DESIGN AND CONSTRUCTION OF PUNGGOL INTERCHANGE STATION AND TUNNELS FOR CRL-PUNGGOL EXTENSION

FIRE CONSULTANCY SERVICES FOR ADVANCE ENGINEERING STUDY FOR THE CROSS ISLAND LINE PHASE 3 (CRL3) – DEPOT

PROFESSIONAL ENGINEERING CONSULTANCY FOR CONTRACT CR3006 ADVANCE ENGINEERING STUDY FOR THE CROSS ISLAND LINE PHASE 3 (CRL3) - MAINLINE

CFD SERVICES & FIRE AND LIFE SAFETY CONSULTANCY SERVICES FOR CONTRACT J-110 DESIGN AND CONSTRUCTION OF JURONG EAST STATION AND VIADUCT INCLUDING ADDITION AND ALTERATION WORKS TO THE EXISTING JURONG EAST STATION FOR JURONG REGION LINE

**TRANSPORT AND  
INFRASTRUCTURE**

# PORTFOLIO SHOWCASE

---

Tunnel And Underground Station Fire Safety and Smoke Management System to Proposed Construction and Completion of Light Rail Transit Line 3 (LRT 3) from Bandar Utama to Johan Setia Comprising 25 Stations.

Develop FSDP for Aboveground LRT Station to Proposed Construction and Completion of Light Rail Transit Line 3 (LRT 3) for Western Corridor from I-City to Johan Setia Comprising 12 Station.

EAST COAST RAIL LINK (ECRL) Tunnels

Mass Rapid Transit Line 2 – Sungai Buloh – Serdang – Putrajaya

Rapid Transit Link (RTS) Phase 4B

Proposed Renovation, Refurbishment and Upgrading Works at KMI Taman Desa Medical Centre (TDMC Hospital Sdn Bhd).

Mass Rapid Transit Authority of Thailand Purple Line Project Contract 1: Tao Pun – National Library Section – FLS & CFD.

Mass Rapid Transit Authority of Thailand Purple Line Project Contract 2: National Library – Phan Fa Section – FLS & CFD.

**TRANSPORT AND  
INFRASTRUCTURE**

# PORTFOLIO SHOWCASE

---

The Hive@NTU  
NTU ABS Engineered Timber  
Building - GAIA  
National Art Gallery  
National Museum of Singapore  
Supreme Court of Singapore  
Kranji Camp  
Nee Soon Camp  
Home Team Tactical Centre Kranji

**INSTITUTIONAL/  
GOVERNMENT**

Outram Community Hospital  
Singapore General Hospital  
Nursing Home @ Geylang  
Nursing Home @ Tampines  
Nursing Home @ Choa Chu Kang  
National Skin Centre  
National University Hospital  
Sengkang General Hospital  
Mount Alvernia Hospital  
Mount Elizabeth Hospital

**HEALTHCARE**

The Capitol  
Marina One  
Paya Lebar Quarters  
Clementi Mall  
Orchard Paragon  
Fraser Tower  
Northpoint City  
Millenia Walk

**COMMERCIAL &  
RETAIL**

Ascott@Bencoolen  
Grand Hyatt  
Pan Pacific  
Millennium Hotel Jakarta  
Millennium Hotel Manila  
Shangri-La Phnom Penh  
Gardens By the Bay  
Regent Hotel  
Hilton Hotel

**HOSPITALITY/TOURISM**

# PORTFOLIO SHOWCASE

---

PNB 118 Kuala Lumpur  
Signature Tower Kuala Lumpur  
The Peak Phnom Penh  
The Bridge Phnom Penh  
V On Shenton  
Alexandra View

**SUPER HIGH RISE/  
RESIDENTIAL**

Singspring Desalination Plant  
Tuas  
PUB Tuas Desalination Plant  
Changi Water Reclamation Plant  
Tuas Water Reclamation Plant

**ENVIRONMENTAL**

Shell Project Houdini  
Tanjong Bin Oil Terminal  
Universal Oil Terminal Hub  
Chevron Terminal Hub

**OIL & GAS**

Ascott@Bencoolen  
Grand Hyatt  
Pan Pacific  
Millennium Hotel Jakarta  
Millenium Hotel Manila  
Shangri-La Phnom Penh  
Gardens By the Bay  
Mandai Park  
Regent Hotel  
Hilton Hotel

**HOSPITALITY & LEISURE**



# SOME OF OUR CLIENTS

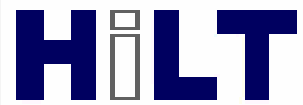


## LOGOS



BS CAPITAL GROUP



The Hilt logo is displayed in a white rectangular box with a thin blue border. The word "HILT" is written in a bold, blue, sans-serif font. The letter "i" is lowercase and has a vertical line through its center. A horizontal blue line is positioned below the text.

# THANK YOU

HiLT Pte Ltd

53B Temple Street

#03-00

Singapore 058598

Tel: 6536 6106

Email: [admin@hilt.com.sg](mailto:admin@hilt.com.sg)

[www.hilt.com.sg](http://www.hilt.com.sg)

